

2008 8

592

339

9

EMT

CCS

2

3

4

5

1

2

3

4

5

6

1

2									
1									
								4455	
MBA		68		878				1057	
	6		68						
	2726		MBA		62			692	
	694			6			67		
		534			28			127	
	1						829	MBA	
	2		88				152		
		79		MBA			3		55
		21							1
	MBA								286
		15		63					
2									
3									

4

360

5

3

4

39

1

:

2

5

9

1

3

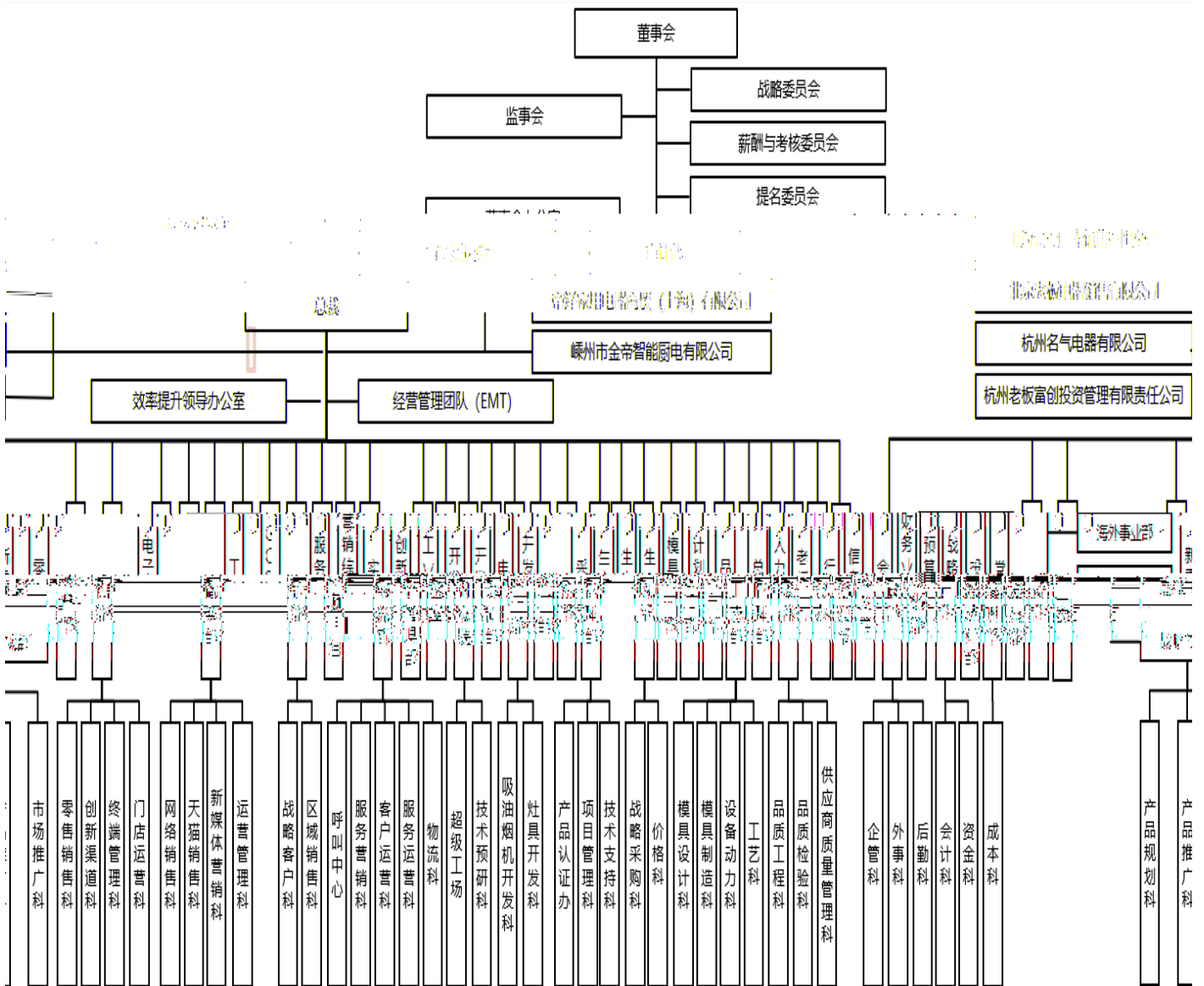
5

2

1

EMT

CCS



6

7

1



2

3

4

5

6

1

2

3

4

2004 12

ERP

ERP



4

QCC  
QCC  
QCC  
QCC  
TQE

5

KA

30%

**1**

**1**

**2**

**3**

**4**

2015 07

**5**



2018 12 31

**2019 4 24**